



BERING 105

BERING COASTAL SERIES

Bering Yachts designs and manufactures steel expedition yachts with class leading capabilities, ranging in size from 50' to 130'.

Through all phases of the process --- concept, design, engineering, and construction --- our vessels are the result of collaboration by an international team of architects, engineers and craftsmen who pay attention to every detail and abide by the highest standards.

Structural steel and aluminum construction along with system redundancy and proven commercial-grade components make Bering Yachts capable, reliable and maximize the quality of life while at sea. Owning a Bering will deliver you with:

- Superior design and engineering
- Simple operation and handling
- Unsurpassed low noise and vibration standards
- Low fuel consumption
- Outstanding seakeeping abilities

The Bering Coastal series includes 4 models:

- Bering 70
- Bering 70 Tempest
- Bering 85
- Bering 105

The Coastal series combines the trusted seakeeping abilities of the Bering brand with a contemporary appearance in the exterior and interior of each model.

Each of the Coastal series models is famous for a distinctive hull shape pioneered by Bering Yachts' naval architects. The long and slender axe hull offers exceptionally low resistance, delivering excellent fuel efficiency, sea-keeping performance, and unsurpassed comfort at all speeds.

The Coastal line of yachts feature streamlined styling and large, open deck layouts. The use of large glass panels allows the flow of natural light and unobstructed ocean views from the main deck. Similarly, the interiors reflect a minimalist and contemporary design aesthetic expressed through the use of unconventional woods, fabrics, worktops, ceiling panels and flooring.

Other trademarks of the Coastal series vessels are fuel efficiency, affordability, low maintenance, and ease of handling by a short-handed crew.





Bering 105 is the flagship of the Coastal series.

Her wave-piercing hull is characterized by a vertical stem and a long and narrow entry. The Coastal hull shape cuts through the water and is less affected by oncoming waves than a bow with more flare. The vessel is also less susceptible to slamming due to the deep forefoot, which doesn't rise above the water level.





Featuring a streamlined profile and reflecting a clean, minimalist style, B105 has a beam of 27' (8.25 metres) and a draft of 6'72" (2.05 metres), combining innovation and strength and creating spacious internal volumes to take her owners and guests anywhere in the world.

She features a semi-displacement steel hull and an aluminium superstructure with accommodations for up to eight guests and four crew in six cabins to ensure a relaxed luxury yacht experience.

Boasting a long hull with a row of vertical portholes just above the waterline and large unobstructed glass panels on the main deck, the Bering 105 design maximizes space and the use of natural light throughout.

Bering 105 is powered by Cummins QSM11-KC engines of 400 hp each, capable of reaching a maximum speed of 14 knots and cruise at 10 knots for 3,500 nautical miles.



BRIEF SPECIFICATIONS BERING 105

Dimensions:

Length overall (LOA)	- 105' (32.00 m)
Length waterline (LWL)	- 103'7" (31.60 m)
Beam	- 27' (8.25 m)
Height	- 29' (8.85 m)
Draft	- 6'7" (2.05 m)
Displacement (238 metric tons)	- 524,700 lbs.
Gross tonnage	- 237 GT

Construction:

Hull	- Marine Grade "A" Steel
Superstructure	- Marine Grade Aluminum 5082

Tank Capacities:

Fuel capacity	- 6,717 gal. (25,430 liters)
Fresh water	- 1,500 gal. (5,670 liters)

Gray Water	- 400 gal. (1,500 liters)
Black Water	- 400 gal. (1,500 liters)

Performance:

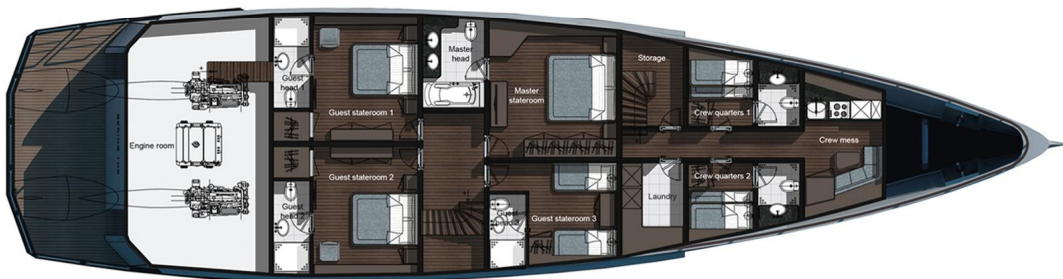
Engines	- Cummins QSM11-KC
Power	- 2 x 400 HP
Cruising speed	- 10 knots
Maximum speed	- 14 knots
Range	- 3,500 nautical miles

Passengers	-8
Crew	-4

Classification

CE certification class A open oceans no limits.

All values are preliminary until the final design is determined.





RALEIGH, 27613, NC, USA
WWW.BERINGYACHTS.COM