



BERING 130

## BERING EXPEDITION SERIES

Bering Yachts designs and manufactures steel expedition yachts with class leading capabilities, ranging in size from 50' to 130'.

Through all phases of the process --- concept, design, engineering, and construction --- our vessels are the result of collaboration by an international team of architects, engineers and craftsmen who pay attention to every detail and abide by the highest standards.

Structural steel and aluminum construction along with system redundancy and proven commercial-grade components make Bering Yachts capable, reliable and maximize the quality of life while at sea. Owning a Bering will deliver you with:

- Superior design and engineering
- Simple operation and handling
- Unsurpassed low noise and vibration standards
- Low fuel consumption
- Outstanding seakeeping abilities

The Bering line of Expedition yachts includes 4 models:

- Bering 77
- Bering 95
- Bering 115
- Bering 130

All these yachts are built for power, safety and comfort. Each vessel remains stable, even in the roughest seas and they are meant to provide you with a ship designed to be your luxurious "home away from home".





Bering Yachts proudly announces the Bering 130 (40 meters) as its newest Expedition Series model and flagship of the Bering fleet.

Striking with her bold and powerful lines, she has been developed in association with Sabdes Design to be a superb transoceanic yacht, ready to take on the heaviest of seas with grace and efficiency due to a tall bow profile that provides the requisite buoyancy to rise up and over approaching swells.



Her expeditionary-styled, tri-deck profile is influenced by the tall bow as well as the Portuguese bridge and pilothouse, features that contribute to her functionality as well as to her aesthetics. The Bering 130 is every bit as capable as she looks, and with her enormous fuel capacity of 17,000 gallons (6,500 liters), she can travel well over 6,000 nautical miles.

Bering 130 features an extremely functional layout on her 31' (9.5 metre) beam. The huge sun deck on the flybridge offers a prime location for entertaining, partially shaded by the hardtop and hosting a wet bar, large Jacuzzi, various lounging areas comprising of lots of fitted sun pads.

Stunning upper deck sky lounge reinforces the indoor/outdoor theme with large doors opening out to the aft. The library area, captain's quarters and pilothouse are all well laid on the upper deck. Alfresco dining for up to 10 and large sun-loungers are available on the aft side of this deck. Exterior side of the main deck incorporates the lounge area with sun-pads, seating and a generous coffee table.

The vast main saloon and dining area (for 10 guests) have huge full-height windows on either side giving the guests a wonderful sea view. The galley, day head and extensive storage areas are also comprised on the main deck.

The forward located full beam master suite comprises a master stateroom with a king size bed, a spacious head and extensive storage areas. Being located on the main deck provides a real convenience over the more typical placement of the master suite in the lower deck, no stairs. In addition to being far more convenient, the master suite offers maximum privacy given the fact it is completely separated from the lower staterooms.

Four luxurious and spacious staterooms comprising large queen size beds and en suite heads make up the lower deck. Fully equipped, dedicated gym and massage therapy cabins, as well as the crew quarters are also located on the lower deck.







# BRIEF SPECIFICATIONS BERING 130

## Dimensions:

Length overall (LOA)	- 132' (40.20 m)
Length waterline (LWL)	- 124' (37.86 m)
Beam	- 31' (9.30 m)
Height	- 44' (13.40 m)
Draft	- 9'1" (2.80 m)
Displacement (479 metric tons)	- 1.056.000 lbs.
Gross tonnage	- 430 GT

## Construction:

Hull	- Marine Grade "A" Steel
Superstructure	- Marine Grade Aluminum 5082

## Tank Capacities:

Fuel capacity	- 17,000 gal. (64,000 liters)
Fresh water	- 2,640 gal. (10,000 liters)

Gray Water	- 1,590 gal. (6,000 liters)
Black Water	- 1,590 gal. (6,000 liters)

## Performance:

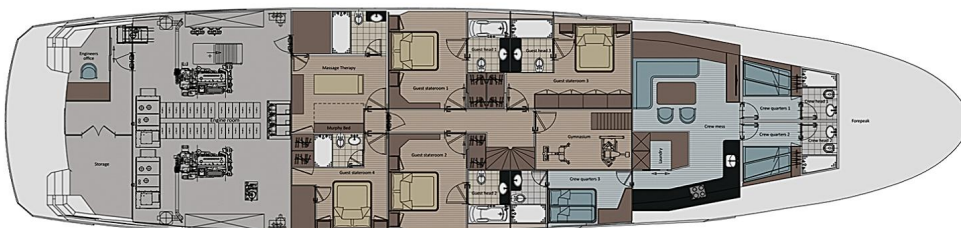
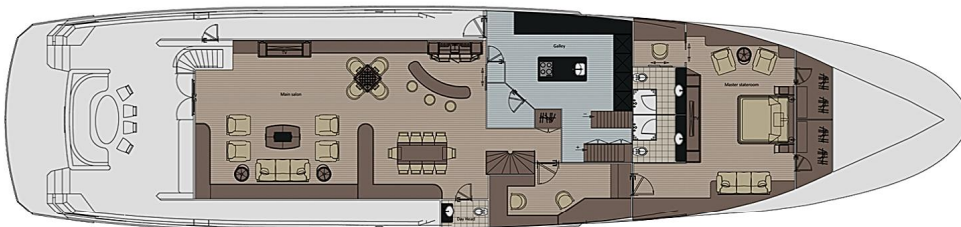
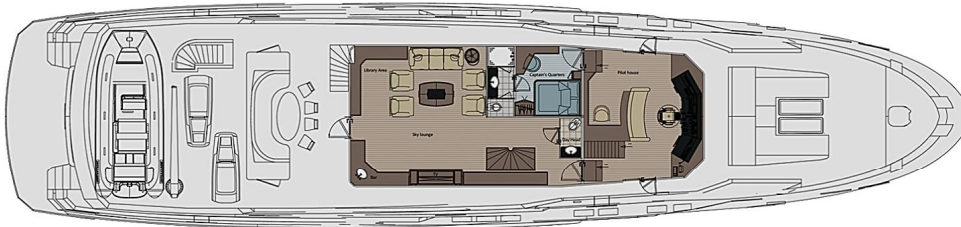
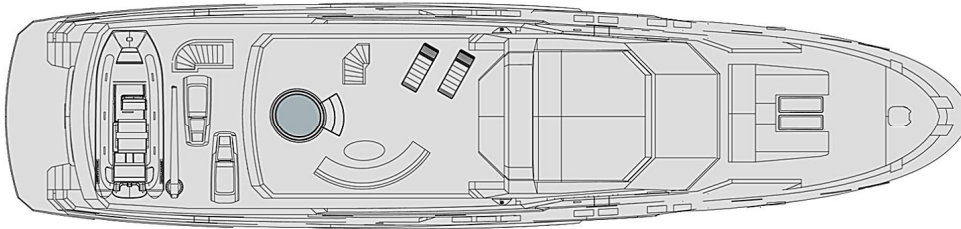
Engines	- Caterpillar C32 ACERT
Power	- 2 x 1200 HP
Cruising speed	- 12 knots
Maximum speed	- 14 knots
Range	- 6,000+ nautical miles

Passengers	-10
Crew	-8

## Classification

CE certification class A open oceans no limits.

*All values are preliminary until the final design is determined.*





RALEIGH, 27613, NC, USA  
[WWW.BERINGYACHTS.COM](http://WWW.BERINGYACHTS.COM)